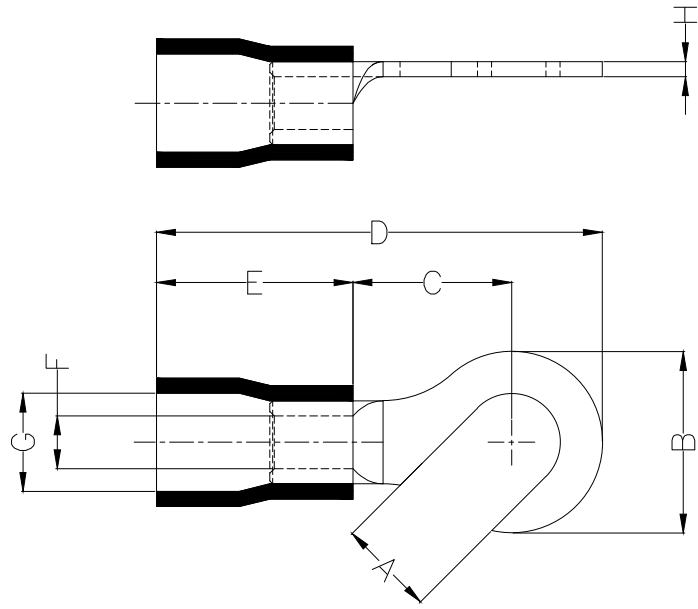


1 2 3 4 5 6 7 8

REV	LOCATIONS	DESCRIPTION	DATE	REVISER	APPD

Notes:

Material: Copper
 Insulator: PVC (UL 94V-0) Blue
 Plating: Matte tin plated
 Wire range: 1.5~2.5mm²/ (16~14AWG)
 Applicable screw: #10 UNC
 Temperature Range-Operating: 0°C~75°C
 Maximum electrical rating: 600V
 Max current: 27A



PART NO.	Dimensions							
	A ±0.3	B ±0.5	C ±1	D ±1	E ±1	F ±0.5	G ±0.5	H ±0.05
FHT01-002000500ABU2	5.3	9.5	6.7	22.0	10.5	2.3	4.7	0.8

<p>THIRD ANGLE PROJECTION</p>	GENERAL TOLERANCES (UNLESS SPECIFIED)		APPROVE BY	DATE	PART NO.	ITEM NO.	<p>Building Technology Cornerstone</p>	
	X. ±0.30	X.* ±5'	LEO	12/JAN/21	FHT01-002000500ABU2	FHT00200		
	X.X ±0.20	X.X' ±2'	CHECKED BY	DATE	TITLE	REV 0		SHEET NO. 1/1
	X.XX ±0.15	X.XX' ±1'	GISELLE	12/JAN/21	Hook tongue terminal			
SCALE	SIZE	X.XXX ±0.10	X.XXX' ±0.5'	DRAWN BY	DATE	THIS DRAWING CONTAINS INFORMATION THAT IS PROPRIETARY TO TXGA INDUSTRIAL ELECTRONICS(S.Z)CO.,LTD AND SHOULD NOT BE USED WITHOUT WRITTEN PERMISSION		
5:1	A4			PYD	12/JAN/21			

1 2 3 4 5 6 7 8